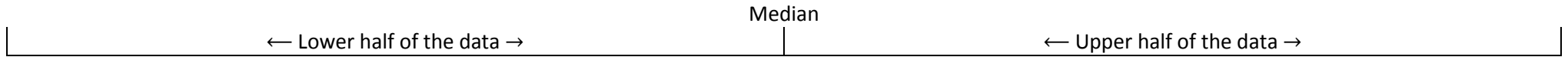


Quartiles and Percentiles

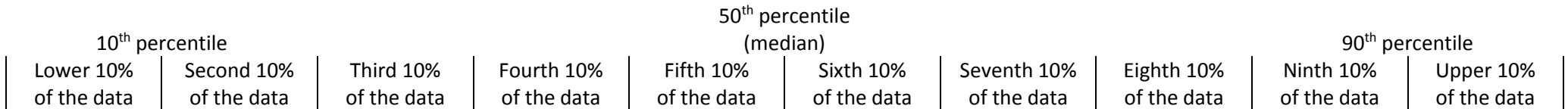
A **median** splits the data range in **half**:



Quartiles split the data range into **quarters**:

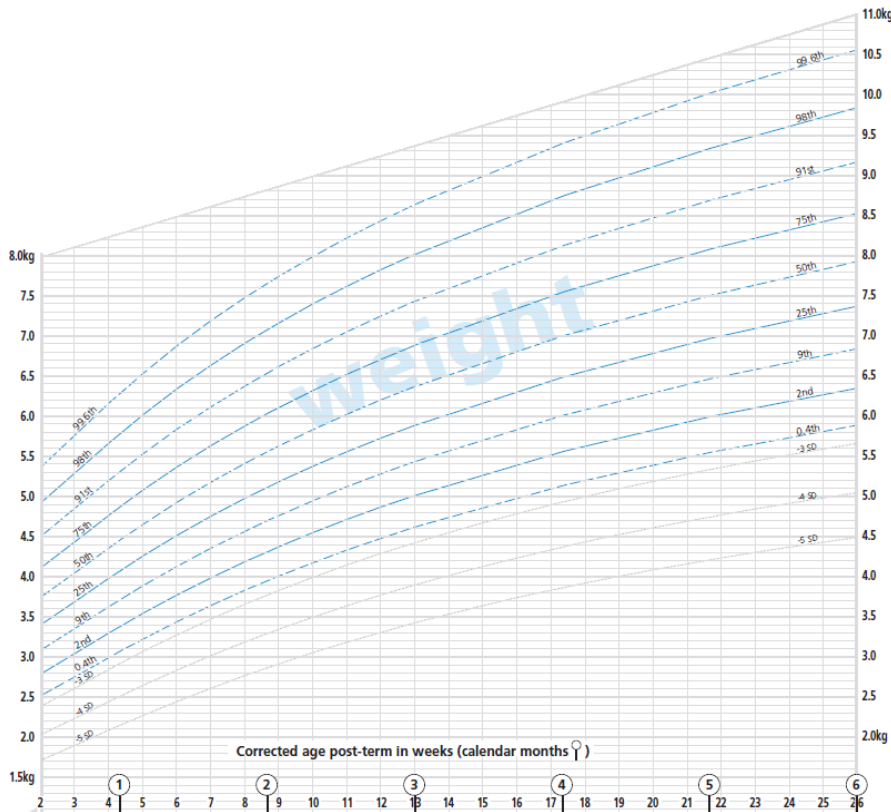


Percentiles split the data range into **hundredths**:



For example, if the weight of a baby is on the 30th percentile it means the baby is heavier than 30% of babies that age, but lighter than 70% of babies that age.

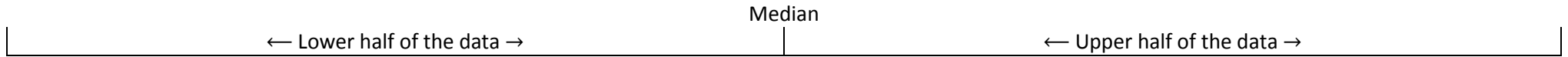
Use the chart opposite to answer the following questions:



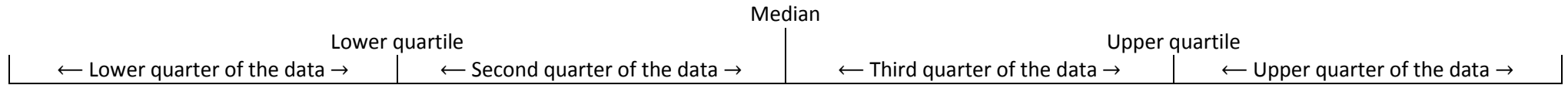
1. What is the median weight of a 6 month old baby boy?
2. How heavy would a 3 month old baby boy need to be to be in the top 9%?
3. A 2 month old baby boy weighs 6kg. What percentage of babies are heavier than him?
4. Many baby car seats are only fit for babies up to 9kg. What percentage of baby boys will need a new car seat by the time they are 19 weeks old?
5. What is the chance of a 3 month old baby boy weighing more than an average 5 month old baby boy?

Quartiles and Percentiles SOLUTIONS

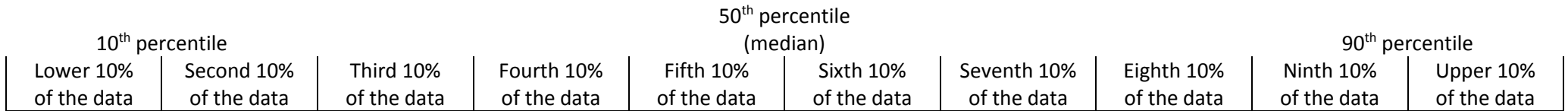
A **median** splits the data range in **half**:



Quartiles split the data range into **quarters**:

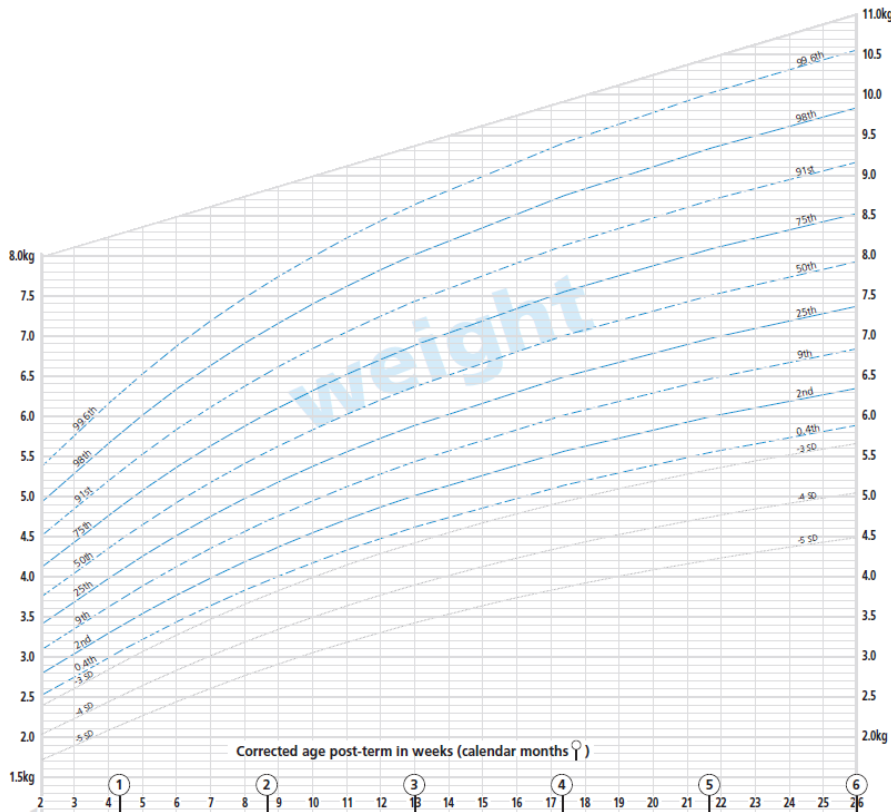


Percentiles split the data range into **hundredths**:



For example, if the weight of a baby is on the 30th percentile it means the baby is heavier than 30% of babies that age, but lighter than 70% of babies that age.

Use the chart opposite to answer the following questions:



1. What is the median weight of a 6 month old baby boy?

7.9kg or 8kg

2. How heavy would a 3 month old baby boy need to be to be in the top 9%?

7.4kg or 7.5kg

3. A 2 month old baby boy weighs 6kg. What percentage of babies are heavier than him?

25%

4. Many baby car seats are only fit for babies up to 9kg. What percentage of baby boys will need a new car seat by the time they are 19 weeks old?

2%

5. What is the chance of a 3 month old baby boy weighing more than an average 5 month old baby boy?

9%