

Please check the examination details below before entering your candidate information

Candidate surname

Other names

Centre Number

Candidate Number

Pearson Edexcel Level 3 GCE

Tuesday 13 June 2023

Afternoon (Time: 2 hours)

Paper
reference

9MA0/02

Mathematics

Advanced

PAPER 2: Pure Mathematics 2

You must have:

Mathematical Formulae and Statistical Tables (Green), calculator

Total Marks

Candidates may use any calculator allowed by Pearson regulations. Calculators must not have the facility for symbolic algebra manipulation, differentiation and integration, or have retrievable mathematical formulae stored in them.

Instructions

- Use **black** ink or ball-point pen.
- If pencil is used for diagrams/sketches/graphs it must be dark (HB or B).
- **Fill in the boxes** at the top of this page with your name, centre number and candidate number.
- Answer **all** questions and ensure that your answers to parts of questions are clearly labelled.
- Answer the questions in the spaces provided
– *there may be more space than you need.*
- You should show sufficient working to make your methods clear. Answers without working may not gain full credit.
- Inexact answers should be given to three significant figures unless otherwise stated.

Information

- A booklet 'Mathematical Formulae and Statistical Tables' is provided.
- There are 15 questions in this question paper. The total mark for this paper is 100.
- The marks for **each** question are shown in brackets
– *use this as a guide as to how much time to spend on each question.*

Advice

- Read each question carefully before you start to answer it.
- Try to answer every question.
- Check your answers if you have time at the end.

Turn over ►

P72805A

©2023 Pearson Education Ltd.
N:1/1/1/




Pearson

2. A sequence $u_1, u_2, u_3 \dots$ is defined by

$$u_1 = 35$$

$$u_{n+1} = u_n + 7 \cos\left(\frac{n\pi}{2}\right) - 5(-1)^n$$

(a) (i) Show that $u_2 = 40$

(ii) Find the value of u_3 and the value of u_4

(3)

Given that the sequence is periodic with order 4

(b) (i) write down the value of u_5

(ii) find the value of $\sum_{r=1}^{25} u_r$

(3)



5. The curve C has equation $y = f(x)$

The curve

- passes through the point $P(3, -10)$
- has a turning point at P

Given that

$$\frac{dy}{dx} = 2x^3 - 9x^2 + 5x + k$$

where k is a constant,

- (a) show that $k = 12$ (2)
- (b) Hence find the coordinates of the point where C crosses the y -axis. (3)



Question 6 continued

DO NOT WRITE IN THIS AREA

DO NOT WRITE IN THIS AREA

DO NOT WRITE IN THIS AREA



Question 6 continued

DO NOT WRITE IN THIS AREA

DO NOT WRITE IN THIS AREA

DO NOT WRITE IN THIS AREA

Lined writing area for the answer to Question 6.

(Total for Question 6 is 6 marks)



Question 7 continued

DO NOT WRITE IN THIS AREA

DO NOT WRITE IN THIS AREA

DO NOT WRITE IN THIS AREA

Lined writing area for the answer to Question 7.

(Total for Question 7 is 7 marks)



P 7 2 8 0 5 A 0 1 7 4 8

8. (a) Express $2 \cos \theta + 8 \sin \theta$ in the form $R \cos(\theta - \alpha)$, where R and α are constants,
 $R > 0$ and $0 < \alpha < \frac{\pi}{2}$

Give the exact value of R and give the value of α in radians to 3 decimal places.

(3)

The first three terms of an arithmetic sequence are

$$\cos x \quad \cos x + \sin x \quad \cos x + 2 \sin x \quad x \neq n\pi$$

Given that S_9 represents the sum of the first 9 terms of this sequence as x varies,

- (b) (i) find the exact maximum value of S_9
 (ii) deduce the smallest positive value of x at which this maximum value
 of S_9 occurs.

(3)



Question 8 continued

Lined writing area for the answer to Question 8.

DO NOT WRITE IN THIS AREA

DO NOT WRITE IN THIS AREA

DO NOT WRITE IN THIS AREA



P 7 2 8 0 5 A 0 1 9 4 8

Question 8 continued

Lined area for writing the answer to Question 8.

DO NOT WRITE IN THIS AREA

DO NOT WRITE IN THIS AREA

DO NOT WRITE IN THIS AREA



Question 9 continued

DO NOT WRITE IN THIS AREA

DO NOT WRITE IN THIS AREA

DO NOT WRITE IN THIS AREA



10. $f(x) = \frac{3kx - 18}{(x + 4)(x - 2)}$ where k is a positive constant

(a) Express $f(x)$ in partial fractions in terms of k . (3)

(b) Hence find the exact value of k for which

$$\int_{-3}^1 f(x) \, dx = 21$$

(4)



Question 10 continued

DO NOT WRITE IN THIS AREA

DO NOT WRITE IN THIS AREA

DO NOT WRITE IN THIS AREA



11.

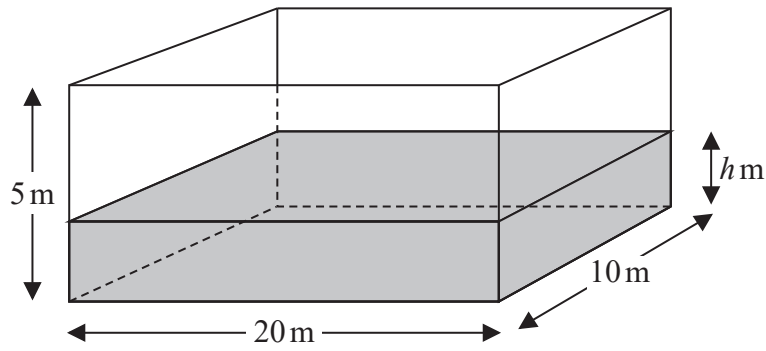


Figure 1

A tank in the shape of a cuboid is being filled with water.

The base of the tank measures 20 m by 10 m and the height of the tank is 5 m, as shown in Figure 1.

At time t minutes after water started flowing into the tank the height of the water was h m and the volume of water in the tank was V m³

In a model of this situation

- the sides of the tank have negligible thickness
- the rate of change of V is inversely proportional to the square root of h

(a) Show that

$$\frac{dh}{dt} = \frac{\lambda}{\sqrt{h}}$$

where λ is a constant.

(3)

Given that

- initially the height of the water in the tank was 1.44 m
- exactly 8 minutes after water started flowing into the tank the height of the water was 3.24 m

(b) use the model to find an equation linking h with t , giving your answer in the form

$$h^{\frac{3}{2}} = At + B$$

where A and B are constants to be found.

(5)

(c) Hence find the time taken, from when water started flowing into the tank, for the tank to be completely full.

(2)



12.

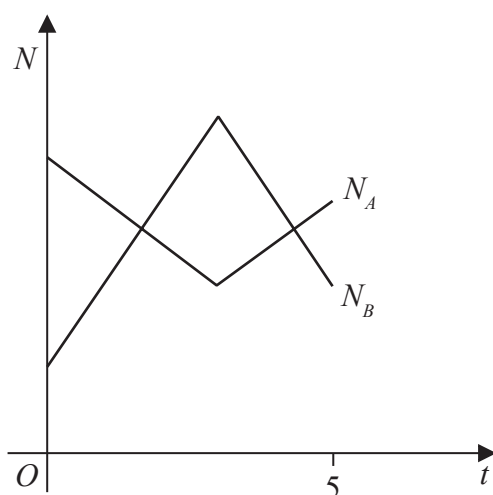


Figure 2

The number of subscribers to two different music streaming companies is being monitored.

The number of subscribers, N_A , in thousands, to **company A** is modelled by the equation

$$N_A = |t - 3| + 4 \quad t \geq 0$$

where t is the time in years since monitoring began.

The number of subscribers, N_B , in thousands, to **company B** is modelled by the equation

$$N_B = 8 - |2t - 6| \quad t \geq 0$$

where t is the time in years since monitoring began.

Figure 2 shows a sketch of the graph of N_A and the graph of N_B over a 5-year period.

Use the equations of the models to answer parts (a), (b), (c) and (d).

- (a) Find the initial difference between the number of subscribers to **company A** and the number of subscribers to **company B**. (2)

When $t = T$ **company A** reduced its subscription prices and the number of subscribers increased.

- (b) Suggest a value for T , giving a reason for your answer. (2)
- (c) Find the range of values of t for which $N_A > N_B$ giving your answer in set notation. (5)
- (d) State a limitation of the model used for **company B**. (1)



13.

In this question you must show all stages of your working.

Solutions relying entirely on calculator technology are not acceptable.

- (a) Find the first three terms, in ascending powers of x , of the binomial expansion of

$$(3 + x)^{-2}$$

writing each term in simplest form.

(4)

- (b) Using the answer to part (a) and using algebraic integration, estimate the value of

$$\int_{0.2}^{0.4} \frac{6x}{(3+x)^2} dx$$

giving your answer to 4 significant figures.

(4)

- (c) Find, using algebraic integration, the exact value of

$$\int_{0.2}^{0.4} \frac{6x}{(3+x)^2} dx$$

giving your answer in the form $a \ln b + c$, where a , b and c are constants to be found.

(5)



Question 13 continued

DO NOT WRITE IN THIS AREA

DO NOT WRITE IN THIS AREA

DO NOT WRITE IN THIS AREA



Question 14 continued

DO NOT WRITE IN THIS AREA

DO NOT WRITE IN THIS AREA

DO NOT WRITE IN THIS AREA

Area with horizontal lines for writing.

(Total for Question 14 is 7 marks)



DO NOT WRITE IN THIS AREA

Question 15 continued

Handwriting practice area with horizontal lines.



