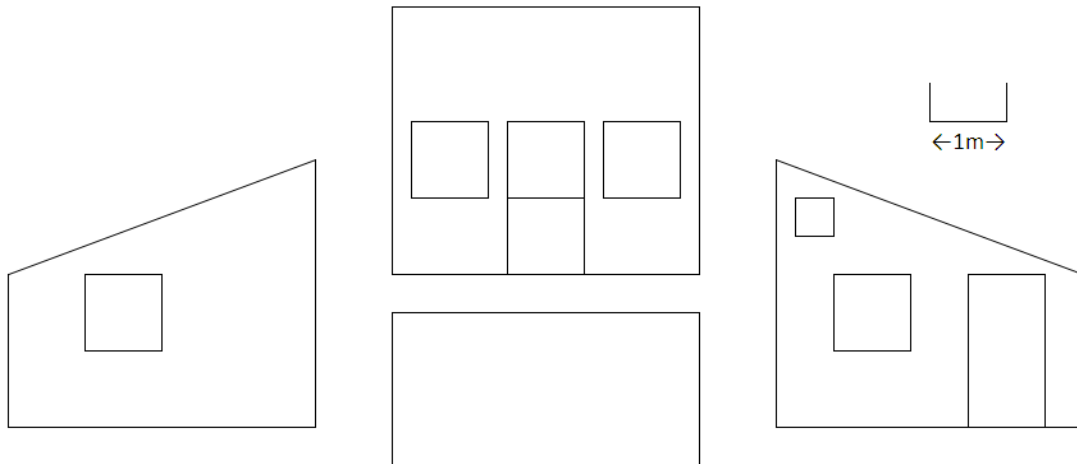


## Building a shack



*Scale Drawing*



The shack is **4m wide** and **4m long**.

It is **3.5m high** at the front, sloping down to **2m** at the back.

The front has two **1m by 1m** windows, either side of a stable door which is **2m high and 1m wide**.

The south side contains two windows, one **1m by 1m** and the other **50cm by 50cm**, and one **2m by 1m** door.

The north side contains just one **1m by 1m** window, and the back has no doors or windows.

1. Using the measurements given, find the total area of paneling needed to build this shack.

2. The paneling boards measure **3m long** by **10cm wide**. How many will I need to complete the job?